

# ViscoPro-C

Votre interlocuteur :

**SYNEO**  
 GROUPE SUPRATEC

## Description



The ViscoPro is the dosing system that combines the advantages of the ViscoTec RD dispensers with the requirements of a compact yet versatile design.

The intelligence of a user-friendly control is integrated into the drive itself. An additional dosing control is usually no longer necessary:

- Weight with ViscoTec dispenser <2.5 kg
- Adjustable dosing quantity
- Adjustable, speed-proportional dosing flow
- Volumetric dosing
- Automatic reverse-flow to prevent dripping
- Easy integration into new or existing systems
- Can be quickly integrated as dosing valve replacement
- Parameterization via PC with RS232 interface
- Only one signal required (start/stop), therefore easy to integrate
- Optional signal exchange

## Application

- Dosing of viscous to highly viscous, shear-sensitive and abrasive products such as: silicones, metal filled pastes (Cu and Ni solder pastes, Al and Ag pastes), adhesives, and paste paints
- bead application adjusted to the tracking speed
- dot dosing with highest volumetric accuracy
- dosed addition into product flow
- connection to robot or axis systems

## Technical data

Electrical data (power supply)	250 VA, 230 V, 50 Hz
Maximum dosing speed	125 rpm
Suitable dispensers	4RD6, 3RD8, 3RD10, 3RD12
Minimum dosing quantity with 4RD6	0,005 ml
Maximum dosing quantity	limited by available dosing time
Minimum dosing flow with 4RD6	0,3 ml/min
Maximum dosing flow with 3RD12	225 ml/min
Dosing accuracy	±1 %*

\* Volumetric accuracy as absolute tolerance based on one revolution of dispenser. Depends on viscosity of dosing medium

## Item number

ViscoPro-K drive unit	135429
-----------------------	--------



### Fabricant

ViscoTec Pumpen- u. Dosiertechnik GmbH  
 mail@viscotec.de • www.viscotec.de

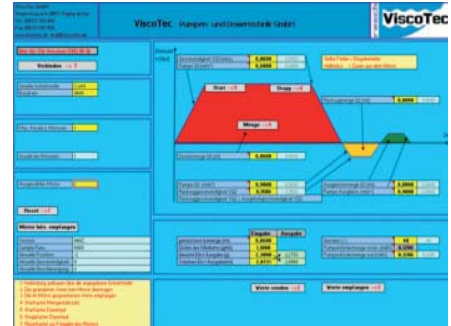
**SYNEO**  
 GROUPE SUPRATEC

Agence en France : **SYNEO - GROUPE SUPRATEC**  
 ZI La Marinière - rue Charles de Gaulle  
 91070 Bondoufle  
 Tél. : +33 (0)1 69 11 81 75  
 infocolle@syneo.net - www.SYNEO.net

## Schematic diagram



Communication



## Additional information

### Signal exchange:

#### Input signals:

- start quantity dosing (impulse)
- high/low for start/stop operation (bead application)
- switchoff inputs for monitoring
- speed control 0 - 10V or 0 - 24V

#### Output signals:

- end of dosing (ready)
- fault

### Scope of delivery:

- ViscoPro dosing system
- Power pack
- Power/signal wires, each 5 m
- CD with software and operating manual
- Attachment clip

Power pack (WxHxD): 102x140x125mm (with plug: 102x140x223mm)

### Necessary and optional components:

- Dispenser size as required for application
- Product feed, e.g. cartridge discharge or hobcock emptying
- Terminalbox (Item number 135250)



**Fabricant**

ViscoTec Pumpen- u. Dosiertechnik GmbH  
mail@viscotec.de • www.viscotec.de



Agence en France : **SYNEO - GROUPE SUPRATEC**

ZI La Marinière - rue Charles de Gaulle  
91070 Bondoufle

Tél. : +33 (0)1 69 11 81 75

infocolle@syneo.net - www.SYNEO.net